



**Scarlett**  
*Solo Wears*

**Emails:**

[info@scarlettsolowears.com](mailto:info@scarlettsolowears.com)  
[info.scarlettsw@gmail.com](mailto:info.scarlettsw@gmail.com)

**Cell:**

+92-327-9986643



# CONTENTS

Sr.	CATEGORIES NAME	Page No.
1	ABOUT US	01
2	AMERICAN FOOTBALL UNIFORMS	02
3	BASKETBALL UNIFORMS	03
4	BASEBALL UNIFORMS	04
5	CRICKET UNIFORMS	05
6	GOALKEEPER UNIFORMS	06
7	HOODIES	07-08
8	ICE HOCKEY UNIFORMS	09
9	MEN SOCCER UNIFORMS	010
10	POLO SHIRTS	011
11	RUGBY UNIFORMS	012
12	TRAINING VESTS	013
13	TRACK SUITS	014
14	T-SHIRTS	015
15	VOLLEYBALL UNIFORMS	016
16	WOMEN SOCCER UNIFORMS	017



# INTRODUCTION

We, **Scarlett Solo Wears**, would like to introduce ourselves as one of the leading manufacturer and exporter of all kind of **SPORTS WEARS, FITNESS WEARS, WORK WEARS** Manufacturing Company and now become leading Quality Products Manufacturing Company with its Commitments to Excellence.

We believe to produce the highest quality in garments. All of our products comply with international quality standards and are greatly appreciated in a variety of different markets throughout the world. We "**Scarlett Solo Wears**" producing their products according to the requirement of customers for example material, logo, designs etc

Our skillful workers are make sure that quality is maintained and each and every step of manufacturing. All products are manufactured according to the standardized pattern.

We are equipped to provide Quality at the most competitive Prices and Design Flexibility for our Customer's Complete Satisfaction. Our Company is good services, quality products and in time deliveries.

---

## Available Technology

We develop and produce custom sports uniforms for your team, so that your team can stand out even more from the rest.



### Screen Printing

offers customized screen printing on your team uniforms.



### Sublimation

excels in using world class sublimation techniques.



### Embroidery / Applique

embroidery applique is a nice way to add branding on your team uniforms.



# AMERICAN FOOTBALL UNIFORMS



## Product Detail

The Custom American Football Uniform is perfect for teams and clubs who want to stand out. Made with high-grade polyester, it is designed to ensure a comfortable fit and long-lasting wear while providing 100% customizable options to put your own personal spin on it.

### Features:

- Customized Moisture-Wicking Fabric
- Printed Size Label

Integrated/Padded Pants Option available

Vibrant sublimation colors with German ink

## Size Chart

SHIRTS	S	M	L	XL	2XL	3XL
CHEST	48cm	51cm	55cm	59cm	63cm	66cm
LENGTH	80cm	83cm	85cm	88cm	90cm	92cm
SHOULDER	37cm	38cm	40cm	42cm	43cm	44cm

SHORTS	S	M	L	XL	2XL	3XL
WAIST	45cm	45cm	46cm	49cm	50cm	52cm
OUT SEAM	67cm	67cm	68cm	69cm	72cm	75cm





**American Football Uniform**  
SSW-SW-1001



**American Football Uniform**  
SSW-SW-1002



**American Football Uniform**  
SSW-SW-1003



**American Football Uniform**  
SSW-SW-1004



**American Football Uniform**  
SSW-SW-1005



**American football Uniform**  
SSW-SW-1006



# BASKETBALL UNIFORMS



## Product Detail

**Material:** 100%polyester, Professional sports fabrics sublimation digital printing , Jersey is made with breathable, sweat-wicking fabric to help keep you cool, dry and comfortable.

**Technics:** Fully Sublimation

**Feature:** Anti-Bacterial, Breathable, Quick Dry

**Colour:** Customize Various Color.

If you need to custom other design ,Go to Contact us after placing your order. We can send a proof so you can approve the design.. send a proof so you can approve the design.

## Size Chart

SIZES	S	M	L	XL	2XL	3XL
SHORT (LENGTH)	18.1"	18.9"	19.7"	20.5"	21.3"	22"
CHEST	19.3"	20"	21"	22"	23"	24"
SHIRT (LENGTH)	27.6"	28.7"	29.5"	30.7"	31.5"	32.3"





**Basketball Uniform**  
SSW-SW-2001



**Basketball Uniform**  
SSW-SW-2002



**Basketball Uniform**  
SSW-SW-2003



**Basketball Uniform**  
SSW-SW-2004



**Basketball Uniform**  
SSW-SW-2005



**Basketball Uniform**  
SSW-SW-2006



# BASEBALL UNIFORMS



**Scarlett**  
Solo Wears

## Product Detail

Premium cut and sew baseball uniforms with panel and piping inserts.

100% lightweight yet strong and breathable polyester fabrics  
Twice-reinforced seams

Inclusions: Sewn On/Tackle twill Team Name, Player Number and Player name

Upgrades available: Neck Tab and Neck Tab Initials, Computer Embroidered Logos, sublimated patterns  
Completely Customizable in Standard & Custom Colors

## Size Chart

SHIRTS	S	M	L	XL	2XL	3XL
CENTRE (BACK)	70cm	72cm	74cm	76cm	78cm	80cm
CHEST	51cm	54cm	57cm	60cm	63cm	66cm

PANTS	S	M	L	XL	2XL	3XL
WAIST	103cm	105cm	108cm	110cm	112cm	114cm
LENGTH	38cm	39cm	40cm	41cm	42cm	43cm



**Baseball Uniform**  
SSW-SW-3001



**Baseball Uniform**  
SSW-SW-3002



**Baseball Uniform**  
SSW-SW-3003



**Baseball Uniform**  
SSW-SW-3004



**Baseball Uniform**  
SSW-SW-3005



**Baseball Uniform**  
SSW-SW-3006



# CRICKET UNIFORMS



## Product Detail

Experience top-quality custom cricket uniforms. Perfect choice for those who demand the best, made from 100% breathable & lightweight fabrics that provide superior airflow and UV protection. The cricket set includes a jersey, trousers/pants, and a cap.

### Features:

- Custom Knitted Dry-Cool Polyester
- Printed Size Label
- Premium Neck Tape
- No MOQs
- Multiple Collar Options are available
- Vibrant sublimation colors with German ink

## Size Chart

SHIRTS	S	M	L	XL	2XL	3XL
CHEST	20"	21"	22"	23"	24"	25"
LENGTH	28"	29"	30"	31"	32"	33"

TROUSER	S	M	L	XL	2XL	3XL
WAIST	30"	32"	34"	36"	38"	40"
OUTSEAM	39"	41"	42"	43"	44.5"	45.5"



**Cricket Uniform**  
SSW-SW-4001



**Cricket Uniform**  
SSW-SW-4002



**Cricket Uniform**  
SSW-SW-4003



**Cricket Uniform**  
SSW-SW-4004



**Cricket Uniform**  
SSW-SW-4005



**Cricket Uniform**  
SSW-SW-4006



# GOALKEEPER UNIFORMS



## Product Detail

Durable and comfortable. Custom Goalkeeper set includes a jersey, shorts, and a pair of socks. Made with lightweight custom-knitted polyester fabric. All uniforms can be customized with any design and color, and fabric customization is also available.

### Features:

- Custom Knitted Dry-Cool Polyester
- Printed Size Label
- Premium Neck Tape
- Custom Neck Design
- Vibrant sublimation colors with German ink

## Size Chart

SHIRTS	S	M	L	XL	2XL	3XL
CHEST	20"	21"	22"	23"	24"	25"
LENGTH	28"	29"	30"	31"	32"	33"

SHORTS	S	M	L	XL	2XL	3XL
WAIST	30"	32"	34"	36"	38"	40"
LENGTH	19"	20"	21"	22"	23"	24"





**Goalkeeper Uniform**  
SSW-SW-5001



**Goalkeeper Uniform**  
SSW-SW-5002



**Goalkeeper Uniform**  
SSW-SW-5003



**Goalkeeper Uniform**  
SSW-SW-5004



**Goalkeeper Uniform**  
SSW-SW-5005



**Goalkeeper Uniform**  
SSW-SW-5006



# HOODIES



## Product Detail

Stay warm and cozy in our winter hoodies! Our hoodies for men are made of high-quality, durable fleece fabric that keeps you warm even on the coldest days.

It features a large front pocket that can hold your little essentials and a hood drawstring to provide perfect adjustments to your hood for a perfect fit. Turn up the look of the outfit by adding this hoodie to your outfit.

100% Ultra-soft Jersey made of polyester You can add your own designs to this T-shirt through our customization feature. Large front pocket. Hood drawstring cord.

## Size Chart

SIZES	XS	S	M	L	XL	2XL	3XL
CHEST	19"	20"	21"	22"	23"	24"	25"
LENGTH	26.5"	27.5"	28.5"	29.5"	30.5"	31.5"	32.5"
SLEEVES	22.5"	23.5"	24"	24.5"	25"	25.5"	26"



**Pullover Hoodie**  
SSW-SW-6001



**Zip Up Hoodie**  
SSW-SW-6002



**Slim Fit Hoodie**  
SSW-SW-6003



**Fleece Or Sherpa Hoodie**  
SSW-SW-6004



**Sleeveless Hoodie**  
SSW-SW-6005



**Overd Hoodie**  
SSW-SW-6006





**Sublimation Hoodie**  
SSW-SW-6007



**Sublimation Hoodie**  
SSW-SW-6008



**Sublimation Hoodie**  
SSW-SW-6009



**Sublimation Hoodie**  
SSW-SW-6010



**Sublimation Hoodie**  
SSW-SW-6011



**Sublimation Hoodie**  
SSW-SW-6012



# ICE HOCKEY UNIFORMS



## Product Detail

Whether you are looking for a practice jersey, a game jersey for your club team or a jersey to support your favorite hockey team, Scarlett solo wears has the custom hockey jerseys for your team. We carry a massive selection of practice jerseys that vary in solid, striped and reversible designs, thicknesses and sizes. Our Jerseys are made of the highest quality materials to give you a professional feel when you have one on.

Customized with your names and numbers in about 2 weeks. custom products is special products so we don't accept any returns and cancellation after receive payment!

## Size Chart

SIZES	S	M	L	XL	2XL	3XL
CHEST	23"	24"	25"	26.5"	28"	29"
LENGTH	31"	32"	33"	34"	35"	35.5"
CUFF	6.25"	6.5"	7"	7.25"	7.5"	8"
ARM HOLE	13"	13"	14"	14.5"	15"	15.5"
TOP ARM (LENGTH)	17.5"	18.25"	20.5"	21"	22"	23"
DOWN ARM (LENGTH)	31"	32.3"	35"	36.2"	38"	39.6"





**Ice Hockey Uniform**  
SSW-SW-7001



**Ice Hockey Uniform**  
SSW-SW-7002



**Ice Hockey Uniform**  
SSW-SW-7003



**Ice Hockey Uniform**  
SSW-SW-7004



**Ice Hockey Uniform**  
SSW-SW-7005



**Ice Hockey Uniform**  
SSW-SW-7006



# MEN SOCCER UNIFORMS



## Product Detail

Material: 92%polyester and 8% spandex ,Professional sports fabrics sublimation digital painting , Jersey is made with breathable, sweat-wicking fabric to help keep you cool, dry and comfortable.

Customized with your names and numbers in need time about 7-10 days. custom products is special products so we don't accept any returns and cancellation after receive payment!

Price includes color design and your names and numbers in your choice of available colors, layouts and type styles.

## Size Chart

SIZES	S	M	L	XL	2XL	3XL
SHORTS (LENGTH)	18.1"	18.9"	19.7"	20.5"	21.3"	22"
CHEST	19.3"	20"	21"	22"	23"	24"
SHIRT (LENGTH)	27.6"	28.7"	29.5"	30.7"	31.5"	32.3"





**Men Soccer Uniform**  
SSW-SW-8001



**Men Soccer Uniform**  
SSW-SW-8002



**Men Soccer Uniform**  
SSW-SW-8003



**Men Soccer Uniform**  
SSW-SW-8004



**Men Soccer Uniform**  
SSW-SW-8005



**Men Soccer Uniform**  
SSW-SW-8006



# POLO SHIRTS



## Product Detail

**Multi Functions:** This top will keep you comfortable no matter how hot the weather gets. Wear it while doing yard work, playing golf, or simply hanging out.

**Material:** This polo shirt is made of Pique Knit Fabric (Poly and Spandex) with a 3-button placket.

**Unique Design:** Hyperfavor has tons of designs, and you'll definitely find one that catches your eyes! Have a look at our collection and pick one that suits your interest. You can even get your polo shirt personalized with pictures and names of you and your loved ones!

**Easy Care:** Machine wash in cold with similar colors/no bleach/low iron.

## Size Chart

SIZE	S	M	L	XL	2XL	3XL
WIDTH	20"	21"	22"	23"	24"	25"
LENGTH	28"	29"	30"	31"	32"	33"
HIP	20"	21"	22"	23"	24"	25"





**Polo Shirt**  
SSW-SW-9001



**Polo Shirt**  
SSW-SW-9002



**Polo Shirt**  
SSW-SW-9003



**Polo Shirt**  
SSW-SW-9004



**Polo Shirt**  
SSW-SW-9005



**Polo Shirt**  
SSW-SW-9006



# RUGBY UNIFORMS



## Product Detail

You can request custom Rugby Uniform in any material. With Custom Embroidery, Printing, Private Labels, Cuts, Sew. Very affordable prices as we are the manufacturer and supplier for all type of custom sportswear.

### Features:

Item Name: Rugby Uniform

Material: 100% Polyester Knitted Eyelet Fabric  
(Also Available In Required Material)

Size: All sizes are available

Printing: Custom Sublimation Printing

Design: Any Custom Design as per Requirement

Logo: Customized logo

Color: Customized Colors

## Size Chart

SHIRTS	S	M	L	XL	2XL	3XL
CHEST	20"	21"	22"	23"	24"	25"
LENGTH	28"	29"	30"	31"	32"	33"

SHORTS	S	M	L	XL	2XL	3XL
WAIST	30"	32"	34"	36"	38"	42"
LENGTH	13.5"	14"	14"	14.5"	15"	15.5"





**Rugby Uniform**  
SSW-SW-10001



**Rugby Uniform**  
SSW-SW-10002



**Rugby Uniform**  
SSW-SW-10003



**Rugby Uniform**  
SSW-SW-10004



**Rugby Uniform**  
SSW-SW-10005



**Rugby Uniform**  
SSW-SW-10006



# TRAINING VEST



## Product Detail

This practical and nice-looking sports vest is manufactured with premium material that is for wearing. You'll love this team exercise vest very much with its mesh design and comfortable texture. Do you want a breathable and comfortable exercise vest? This is definitely a good choice.

### Feature

Color: Shiny green.

Material: Mercerized cotton and Polyester.

Size: Approx. 50 x 32 cm.

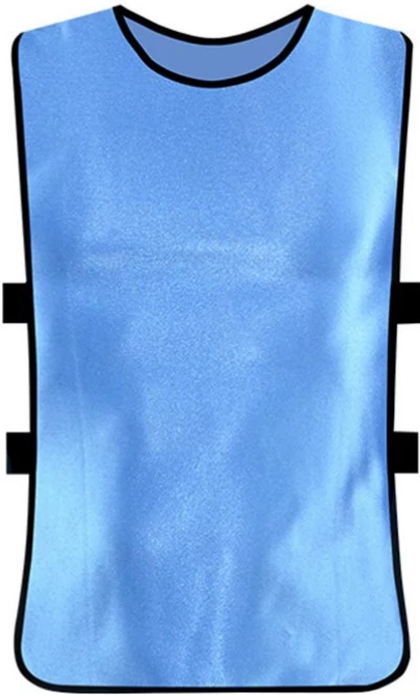
Fashion-forward and ergonomic designs with impeccable stitching.

Perfect vest tops for football training, running, jumping and other exercise activities.

## Size Chart

SIZE	S	M	L	XL
WIDTH	10.5"	12.6"	16.9"	18.5"
LENGTH	20"	21.7"	25.6"	28.3"





**Training Vest**  
SSW-SW-11001



**Training Vest**  
SSW-SW-11002



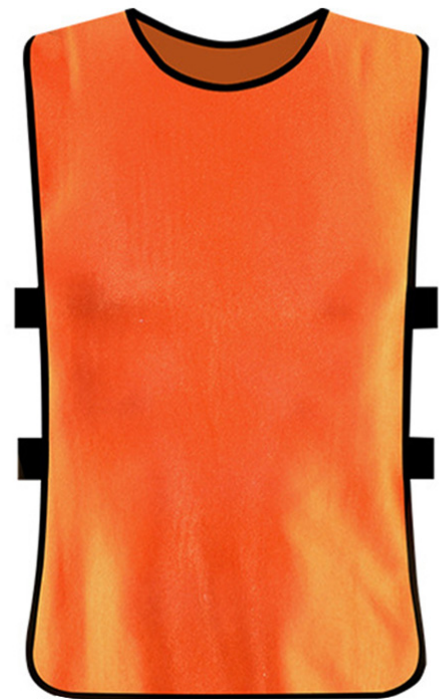
**Training Vest**  
SSW-SW-11003



**Training Vest**  
SSW-SW-11004



**Training Vest**  
SSW-SW-11005



**Training Vest**  
SSW-SW-11006



# TRACK SUITS



## Product Detail

The customized sublimated warmup is designed to provide teams and clubs with a personal look that can help foster team spirit and identity. The warmups are made out of polyester or cotton fabric and are Sweat Absorbent, Quick Drying, and Lightweight, making them the perfect team wear.

### Features:

- Customized Fabric, available in both Cotton and Polyester
- Printed Size Label
- Premium Neck Tape
- Full Zip, Half Zip, Pull Over all custom options available
- Customize the warmups with printing and embroidery

## Size Chart

SHIRTS	S	M	L	XL	2XL	3XL
CHEST	20"	21"	22"	23"	24"	25.5"
LENGTH	27"	28"	29"	30"	31"	32"

TROUSER	S	M	L	XL	2XL	3XL
WAIST	30"	32"	34"	36"	38"	40"
OUTSEAM	38.5"	40"	41.5"	43"	44.5"	45.5"
INSEAM	29.5"	30.5"	31.5"	32.5"	33.5"	34.5"





**Track Suit**  
SSW-SW-12001



**Track Suit**  
SSW-SW-12002



**Track Suit**  
SSW-SW-12003



**Track Suit**  
SSW-SW-12004



**Track Suit**  
SSW-SW-12005



**Track Suit**  
SSW-SW-12006



# T-SHIRTS



## Product Detail

Comfort All The Way Comfortably Loose Fit With Drop Shoulders That Does Not Hug the Body. Stands in the Middle of an Oversized & Regular Fit, Making Movement Easy.

### Features & Care

100% Cotton  
Machine Wash  
Do Not Bleach  
Iron up to 110C / 230F  
Do Not Dry Clean  
Do Not Tumble Dry  
Perfect for your summer season events.

## Size Chart

SIZE	S	M	L	XL	2XL	3XL
WIDTH	20"	21"	22"	23"	24"	25"
LENGTH	28"	29"	30"	31"	32"	33"
HIP	20"	21"	22"	23"	24"	25"





**T-Shirt**  
SSW-SW-13001



**T-Shirt**  
SSW-SW-13002



**T-Shirt**  
SSW-SW-13003



**T-Shirt**  
SSW-SW-13004



**T-Shirt**  
SSW-SW-13005



**T-Shirt**  
SSW-SW-13006



# VOLLYBALL UNIFORMS



## Product Detail

You can request custom Volleyball Uniform in any material. With Custom Embroidery, Printing, Private Labels, Cuts, Sew. Very affordable prices as we are the manufacturer and supplier for all type of custom sportswear.

### Features:

Name: Rugby Uniform  
Material: 100% Polyester Knitted Eyelet Fabric  
Size: All sizes are available  
Printing: Custom Sublimation Printing  
Design: Any Custom Design as per Requirement  
Logo: Customized logo  
Color: Customized Colors

## Size Chart

SHIRTS	S	M	L	XL	2XL	3XL
CHEST	21.3"	22"	22.9"	23.6"	24.4"	25.2"
LENGTH	29.1"	30"	31"	31.5"	32.3"	33"

SHORTS	S	M	L	XL	2XL	3XL
WAIST	13.4"	14.2"	15"	15.8"	16.6"	17.4"
LENGTH	15.4"	15.8"	16.2"	16.6"	17"	17.4"





**Volleyball Uniform(Men)**  
SSW-SW-14001



**Volleyball Uniform(Men)**  
SSW-SW-14002



**Volleyball Uniform(Men)**  
SSW-SW-14003



**Volleyball Uniform(Women)**  
SSW-SW-14004



**Volleyball Uniform(Women)**  
SSW-SW-14005



**Volleyball Uniform(Women)**  
SSW-SW-14006



# WOMEN SOCCER UNIFORMS



## Product Detail

**Material:** 92%polyester and 8% spandex ,Professional sports fabrics sublimation digital painting , Jersey is made with breathable, sweat-wicking fabric to help keep you cool, dry and comfortable.

Customized with your names and numbers in need time about 7-10 days. custom products is special products so we don't accept any returns and cancellation after receive payment!

Price includes color design and your names and numbers in your choice of available colors, layouts and type styles.

## Size Chart

SIZES	S	M	L	XL	2XL	3XL
BUST 1/2	18.90"	20.47"	22.05"	23.23"	24.41"	25.20"
SHOULDER	16.14"	16.93"	17.72"	18.11"	18.50"	18.90"
WAIST	13.39"	14.96"	16.54"	17.32"	18.11"	18.50"





**Women Soccer Uniform**  
SSW-SW-15001



**Women Soccer Uniform**  
SSW-SW-15002



**Women Soccer Uniform**  
SSW-SW-15003



**Women Soccer Uniform**  
SSW-SW-15004



**Women Soccer Uniform**  
SSW-SW-15005



**Women Soccer Uniform**  
SSW-SW-15006



# FABRIC & COLOURS

## FABRICS



**COTTON**  
Cotton 100%



**FELPA**  
Cotton 100%



**ELCOTTON**  
Cotton 88% - Lycra 12%



**STRETCH POWER**  
Polyester 80% - Lycra 20%



**X-FIT**  
Polyester 100%



**FILANCA**  
Polyester 100%



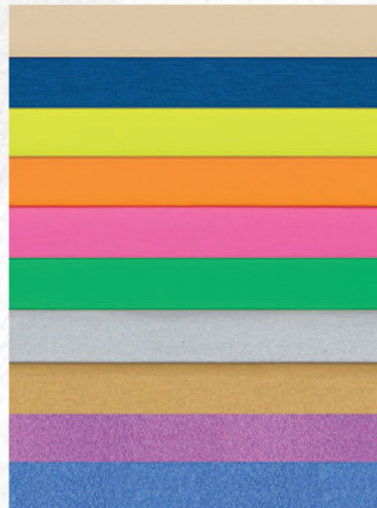
**WINDTEXLIGHT**  
Polyester 100%

## COLOURS



WHITE  
GREY MELANGE  
GREY  
DARK GREY  
BLACK  
BROWN  
YELLOW  
ORANGE  
RED  
WINE  
PINK  
FUCHSIA  
VIOLET  
NAVY  
ROYAL  
LIGHT BLUE  
GREEN  
DARK GREEN

## SCREEN PRINTING



BEIGE  
FRENCH BLUE  
FLUO YELLOW  
FLUO ORANGE  
FLUO PINK  
FLUO GREEN  
SILVER  
GOLD  
NACRÉ FUCHSIA  
NACRÉ BLUE





**Scarlett**  
*Solo Wears*

**Emails:**

[info@scarlettsolowears.com](mailto:info@scarlettsolowears.com)  
[info.scarlettsw@gmail.com](mailto:info.scarlettsw@gmail.com)

**URL:**

<https://scarlettsolowears.com>

**Address:**

Street No1, Shahab Pura, Jeevan Pura,  
Sialkot-51310-Pakistan.

**Cell:**

+92-327-9986643